

# Parkheath

*Sold on Service*

**Harley Road NW3**  
**Asking Price £725,000**



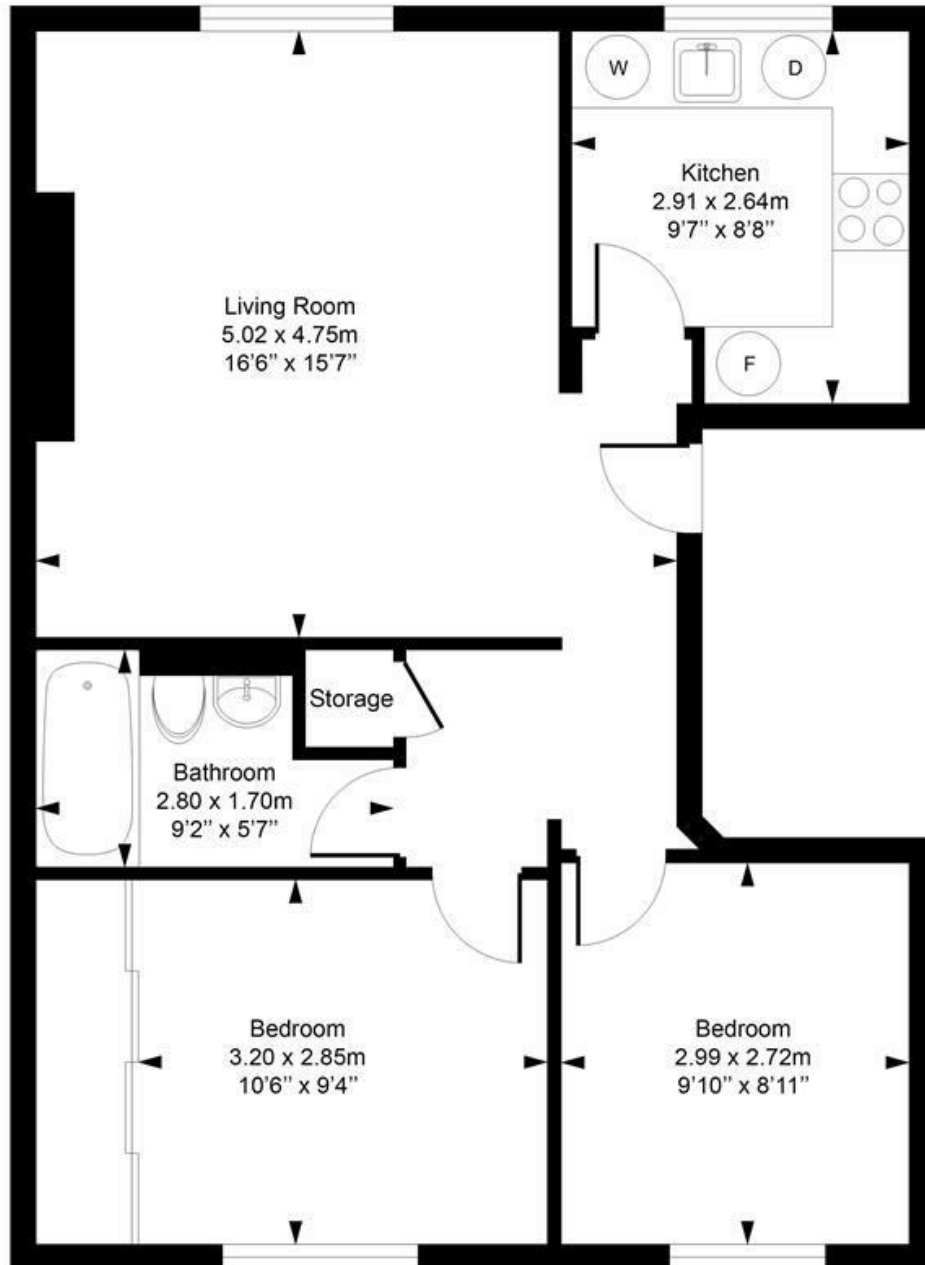
Stylish 2 bedroom apartment  
Wood flooring and high ceilings  
158 years from 2011  
Approximately 655 sq ft  
10` main bedroom with wardrobes

Semi-detached period conversion  
Separate 9` kitchen  
Entire first floor  
Attractive 16` reception  
Moments from Swiss Cottage and Primrose Hill

Belsize Park Office 020 7431 3104

# Harley Road

Approximate Gross Internal Area= 60.81 sq.m / 654.55 sq.ft



## First Floor

Measured in accordance with RICS guidelines. Every attempt is made to ensure accuracy  
However all measurements are approximate.  
The floor plan is illustrative purposes only and is not to scale  
ELLIE CLAIRE PHOTOGRAPHY LTD  
[www.ellieclairephotography.com](http://www.ellieclairephotography.com)

The particulars do not constitute part of an offer or contract. The particulars, including text, photographs and plans, are for the guidance only of prospective purchasers/tenants and must not be relied upon as statements of fact. The descriptions provided therein represent the opinion of the author and whilst given in good faith should not be construed as statements of fact. Nothing in these particulars shall be deemed a statement that the property is in good condition or otherwise or that any services or facilities are in good working order. All measurements are approximate